

# shopdisplaysystems

## VF2: Carrier Bag Stand

Upright posts on weighted bases with 200mm long hangers.

Stands ideal for use at exhibitions, at shows or in shops.

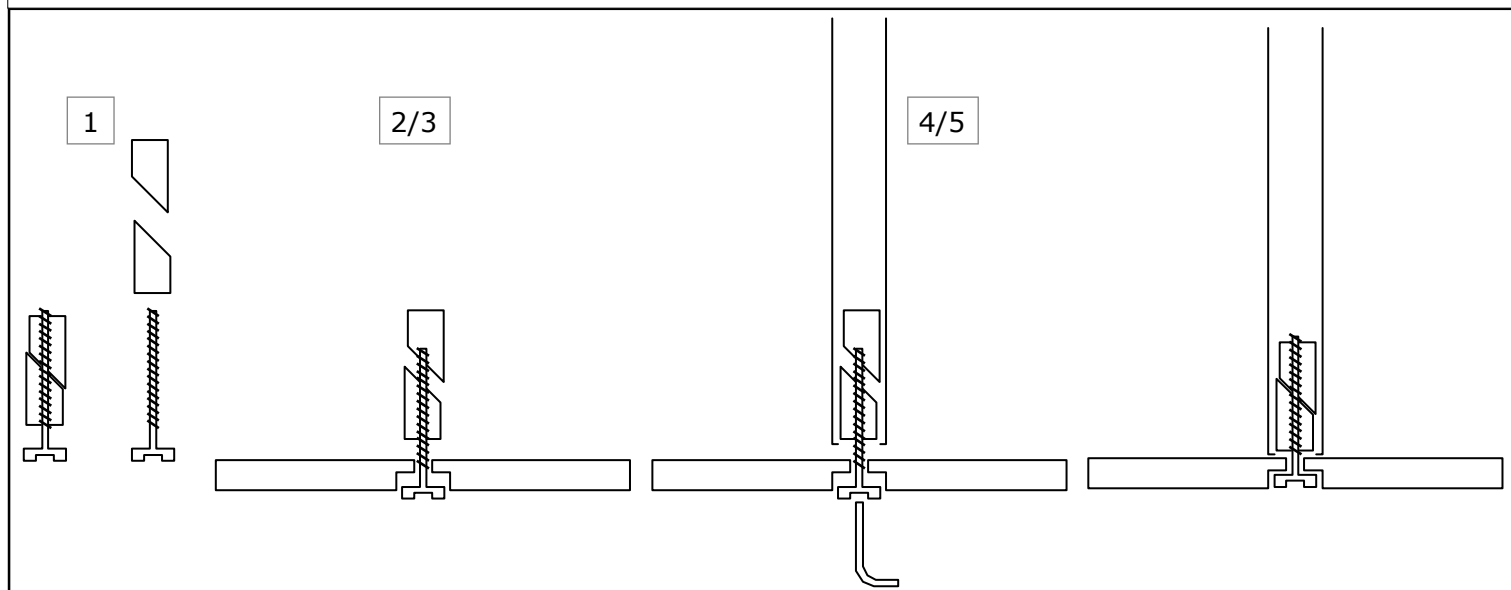
Popularly used to display hanging merchandise and goods as well as carrier bags.

<b><u>COMPONENT LIST</u></b>	Per display:
Anodised aluminium post - 50mm diameter, 1495mm tall, 2 or 4 channels (as specified)	1
Weighted circular base - 400mm diameter (8mm mild steel, powder-coated silver-grey)	1
Spigot (to fix post to base)	1
Plastic end cap (to fix to top of post)	1
Stainless steel bar, 6mm diameter, 200mm long. Domed at one end, threaded at the other	As specified
2-part fixing - brass 'inner' to slide into channel, nickel-plated brass 'outer' to screw over 'inner' (and tighten to hold in position) and with female thread to accept threaded s/s bar	1 per bar
Bar end stop - nickel-plated brass	1 per bar

## **ASSEMBLY INSTRUCTIONS**

### FIX BASE(S) TO POST(S)

1. Undo spigot (remove bolt)
2. Put bolt through weighted base plate from underside
3. Part-screw rectangular fitting (comes split diagonally into two parts) back on to bolt
4. Place rectangular part of fitting inside base of upright (opposite end to angled plate)
5. Tighten bolt using large allen key supplied (to lock base securely into upright).



[www.shop-display-systems.co.uk](http://www.shop-display-systems.co.uk) - VF2: carrier bag stand product link:

<http://www.shop-display-systems.co.uk/ProductDetails.aspx?ProductCategoryID=3&ProductSubCategoryID=2&ProductID=25>

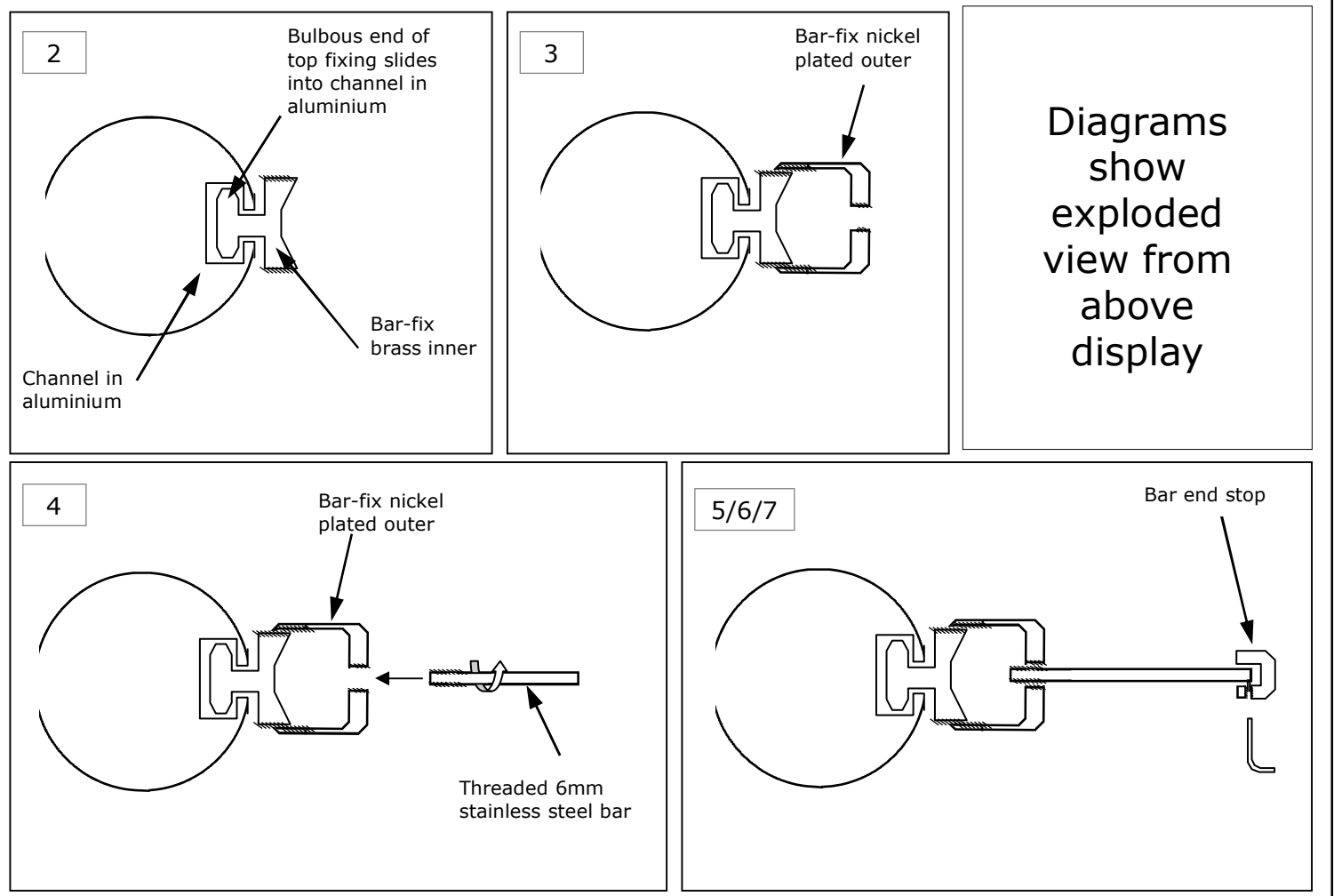
# shopdisplaysystems

## ASSEMBLY INSTRUCTIONS

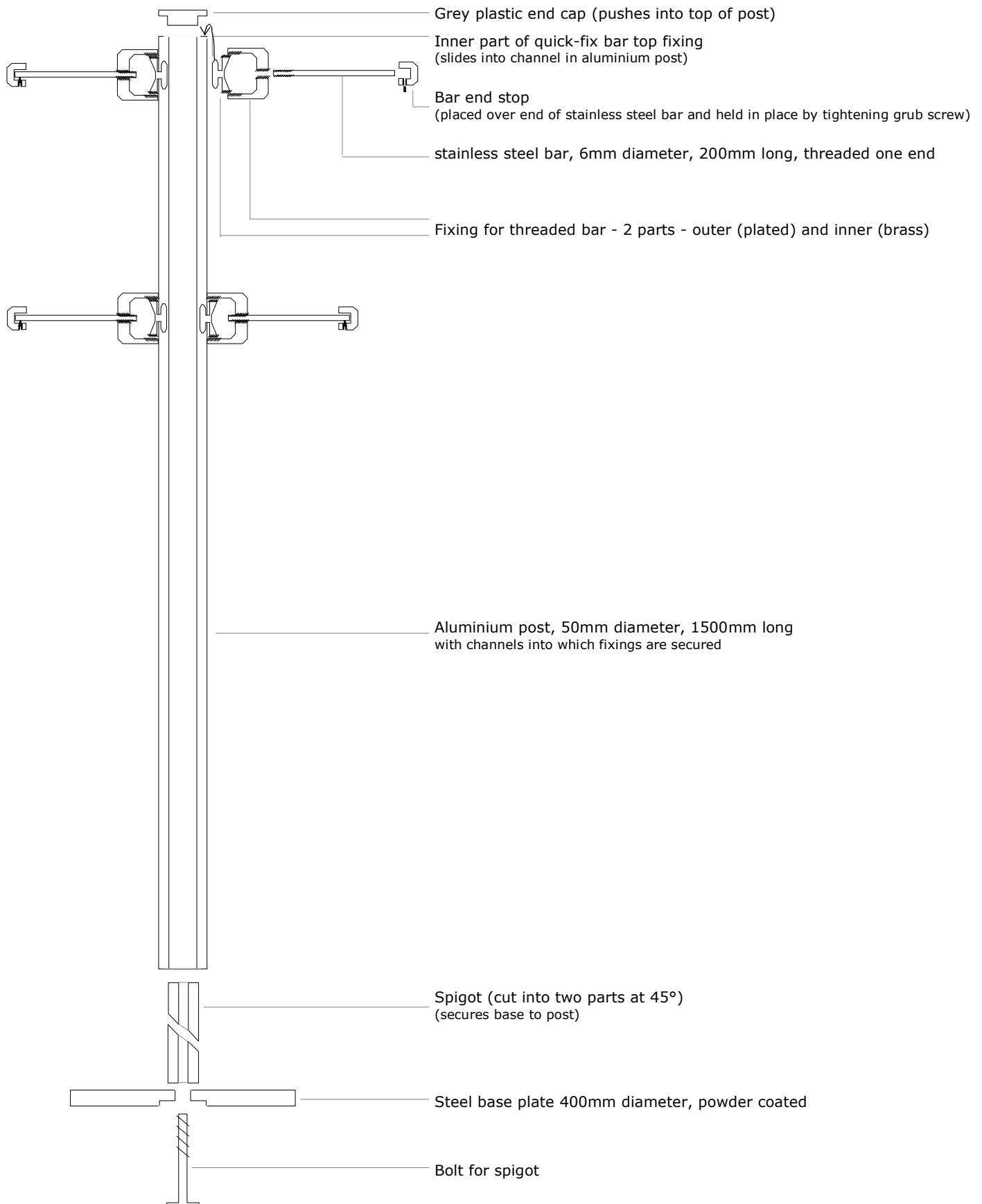
### FIX BARS TO POST

#### FOR EACH HANGER:

1. LOOSELY screw bar-fix outer (nickel-plated) and inner (brass) fixing together
2. Holding bar-fix outer, slide inner fixing into channel in post (from the top)
3. Holding fixing in the desired position, screw bar-fix outer TIGHTLY on to inner, until it grips firmly and holds in place.
4. Screw threaded stainless steel bar tightly into bar-fix fitting.
5. Loosen grub screw in bar end stop using small allen key supplied.
6. Push bar end stop fully on to end of bar (with grub screw out of sight underneath gives the best look).
7. Tighten grub screw on to bar to hold end stop securely in place



# shopdisplaysystems



[www.shop-display-systems.co.uk](http://www.shop-display-systems.co.uk) - VF2: carrier bag stand product link:

<http://www.shop-display-systems.co.uk/ProductDetails.aspx?ProductCategoryID=3&ProductSubCategoryID=2&ProductID=25>